



Hyperbaric Consult A/S

Havnen 5/1
3250 Gilleleje
Denmark

info@hbc-tec.dk
www.hbc-tec.dk
+45 70 23 16 47



DANISH WIND
INDUSTRY ASSOCIATION



Hyperbaric Consult A/S is a dynamic company with broad and diverse experience within the field of diving support for offshore construction, hyperbaric management, underwater and topside engineering and inspection.

HBC has participated in several different wind farm projects in Europe and is a very experienced company within all subsea aspects of wind farm development, IMR (Inspection, maintenance and repair) and NDT testing.



• Diving support • ROV support • Inspection, Repair & Maintenance

• Surveying • Repair & Maintenance • Trenching

• Cargo transport (fuel, oil or freshwater)

The ship

The DP1 Diving Support Vessel "HBC Achiever" is a 36 meter long, four point mooring vessel built in 2014 on the basis of our experience and according with specific requirements of HBC. She has been specifically set up and equipped for providing diving support for offshore construction, Inspection, Repair and Maintenance.

The work

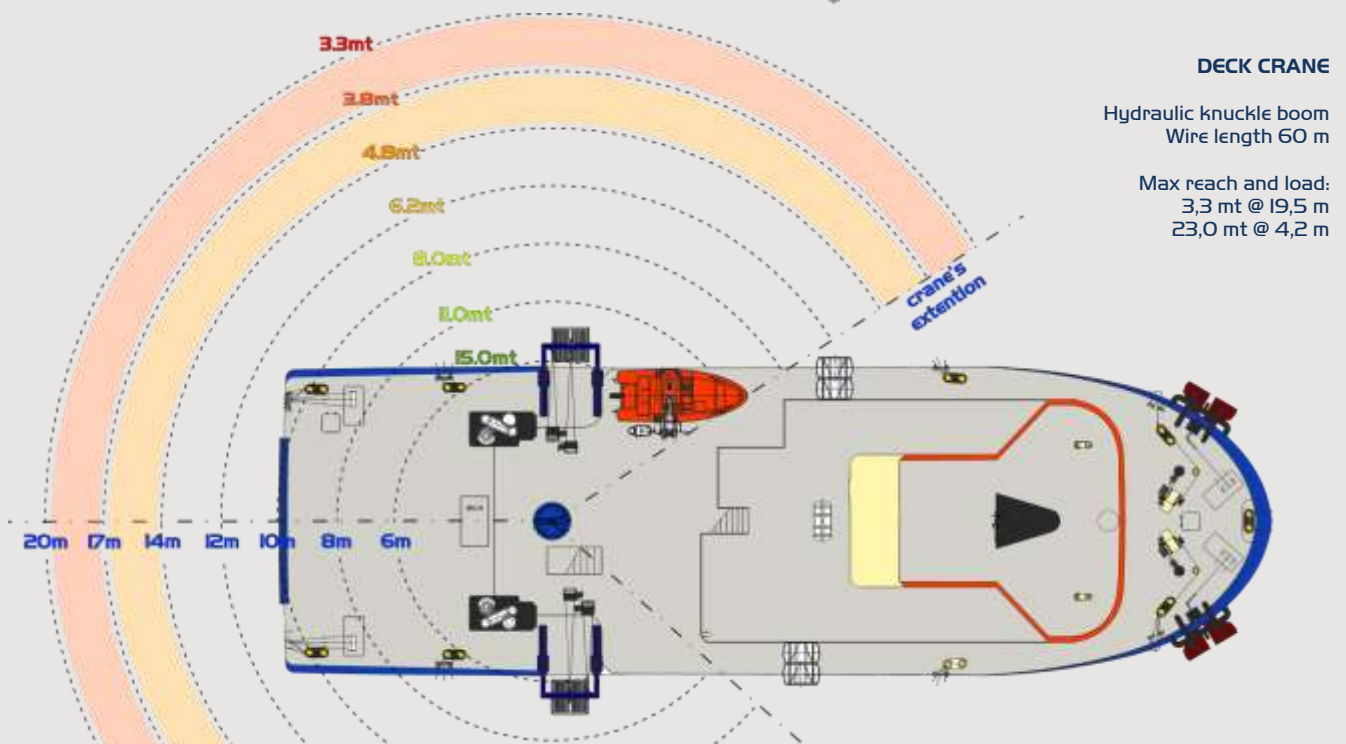
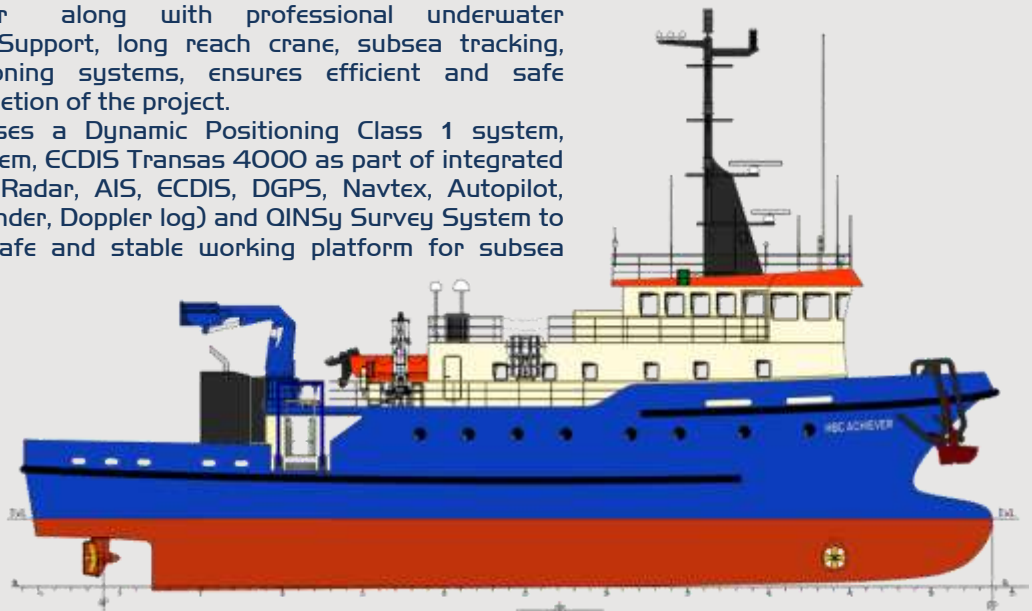
"HBC Achiever" is capable of conducting offshore surveys, trenching and conducting ROV operations. "HBC Achiever" has wide experience in offshore construction and maintenance. The capability of "HBC Achiever's" services can additionally be extended to include transporting fuel, oil, freshwater, general cargo and personnel.

The system

Modern diving systems including IMCA standard twin lock Decompression Chamber along with professional underwater hydraulic tools, ROV Support, long reach crane, subsea tracking, surveying and positioning systems, ensures efficient and safe operations during completion of the project.

"HBC Achiever" uses a Dynamic Positioning Class 1 system, four point mooring system, ECDIS Transas 4000 as part of integrated bridge system (ARPA Radar, AIS, ECDIS, DGPS, Navtex, Autopilot, Gyrocompass, Echosounder, Doppler log) and QINSy Survey System to provide an accurate, safe and stable working platform for subsea projects.

With the use of Sonardyne transducer system connected with ship in DP mode – the ship is able to track a target (diver, ROV or other) with precision of less than one meter.



GENERAL SPECIFICATIONS

Classification	Diving Support Vessel DP1
Flag State Authority	Danish International Ship Register
Port of Registry	Gilleleje
Classification Authority	RINA
IMO Number	9647978
Call Sign	OWMH2

MAIN PARTICULARS

Overall Length	35,99 m
Beam	11,44 m
Summer Draught	3,092 m
Airdraft	18,7 m
Gross Tonnage	487 GT
Net Tonnage	146 NT

ENGINE POWER & PROPULSION

Engine	2x 331 kW
Generator	3x 180 kW /225 kVA
Bow Thruster	1x Schottel ST110FP 150kW
Rudderpropellers	2x Azimuth Thrusters: Schottel SRP 200, 280-410 kW

SPEED

Economical Speed	8,5 knots
Full Speed	10,5 knots

CONSUMPTION

In port	0,25 m3 / 24 hrs
Transit	4 m3 / 24 hrs
DP mode maneuvering	3 m3 / 24 hrs
Diving operations	0,5 m3 / 24 hrs

TANK CAPACITIES (100%)

Fuel Oil	70,0 m ³
Fresh Water	48,0 m ³

CARGO DECK

Main Deck Area	80 m ²
Upper Deck Area	28 m ²
Bridge Deck Area	38 m ²

DECK CRANE

Type	Hydraulic knuckle boom
Wire length	60 m
Main Crane max reach and load:	3,3 mt @ 19,5 m 23,0 mt @ 4,2 m

IMCA

CMID	M 149 & M 189 compliant
Diving Services and Systems	compliant

PERSONNEL

Crew	10 pers
Project team	22 pers

DIVE SYSTEM

Fully integrated 3 diver panel with multiple redundancies
Twin lock IMCA standard Decompression Chamber
Nitrox compressor for on-site production Bauer B-TROX
Hot water system 2x Aquila HB254
Diving Launch and Recovery 2x LARS diving basket
Diver hydraulic and pneumatic tool station
Full CSWIP inspection capabilities
Coded welding and burning facilities

SURVEY SYSTEM

QINSy ver. 8.0

ROV

Sperre A/S	Subfighter SUB-10K
------------	--------------------

NAVIGATION AIDS

Fully Integrated Bridge System:
Transas Navi-Sailor 4000 Dual ECDIS
Multi-purpose display system 2x 26" & 2x19" Monitors
Radar ARPA 2x Transas Navi-Radar 4000 X-band 3 cm
AIS Class-A, JRC JHS-183
Autopilot Navis AP4000
Gyrocompass GC-80 Simrad
DGPS JRC JLR-31
Echosounder JRC JFE-380-25 50/200kHz
Navtex JRC NCR-333
Speed log Doppler log system, JRC JLN-205

DYNAMIC POSITIONING SYSTEMS

DP System DP1 Navis NavDP 4000
ROV following mode with HPR interface

DP INTERFACES AND SENSORS

DGPS and GPS Satellite Compass	x2
Gyrocompass	x1
VRU/MRU	x2
Thruster and propulsion interface	x4
Wind sensor	x2
Hydrostatic Pos.Ref. (HPR) <Sonardyne Ranger 2>	x1

COMMUNICATION SYSTEMS

Marine Satellite Broadband KNS Sea Master
Satellite Internet (by V-SAT) SuperTrack A9
VHF DSC Sailor 6220
VHF RT x3 Sailor 6248
MF/HFSSB RT Sailor 6310
UHF x4 Icom IC-2820E

